

8

UNIQUE FEATURES of ZYTO BIOCOMMUNICATION

1

Created by Dr. Vaughn R Cook



- Energetic medicine pioneer
- Expert in integrating Eastern & Western medicine
- 30+ years of clinical experience

2

ZYTO Hand Cradle is cleared by the FDA



- Registered as a Class II medical device
- Safely and accurately measures galvanic skin response

3

Design ensures the most accurate results



- 6 points of contact instead of 2
- Each contact point has large surface area

4

Customizable, easy-to-understand reports



- See relationships, patterns, & trends in data
- Personalize report cover page

5

Thousands of items available to scan for



- More than 8,000 biomarker Virtual Items
- Products from 200+ wellness companies

6

Wide variety of products to meet unique needs



- Network marketers
- Practitioners
- Shop owners
- Wellness enthusiasts

7

Perception reframing technology complements scanning



- Powerfully addresses emotional aspect of health
- Maps voice frequencies to reframe perceptions

8

Flexible scanning options



- Scan selected biomarkers & products
- See biomarker responses
- Scan for services
- Scan clients remotely
- Automated & manual scans



WHY GET ONE?

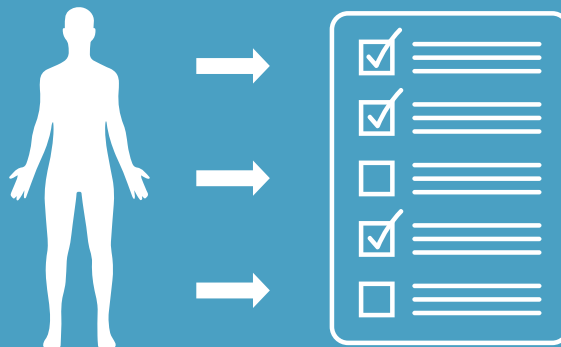
ZYTO products help you make better decisions about your wellness. That's why ZYTO technology is referred to as wellness decision-support technology. It's important to note that ZYTO scans are not designed or intended to treat or diagnose.



WHAT IS A ZYTO SCAN?

ZYTO scans are organized into what are called biosurveys. You've probably filled out a survey before: a series of questions that you provide answers to. A biosurvey is similar to a survey, only you don't answer the "questions" consciously—your body answers them directly.

With ZYTO biocommunication, the "question" is a logarithmic digital signature in the ZYTO software, which we call a Virtual Item. The answer is found by measuring changes in the electrical properties of your skin, which are then analyzed by the ZYTO software.



A biosurvey can be as varied and versatile as any other survey. Some biosurveys are general in nature and include Virtual Items concerned with overall wellness, while others include items relating to specific body areas or systems. There are also biosurveys that deal with environmental factors.



IS IT SAFE?

There are no known contraindications for properly administered ZYTO scanning. The amount of energy used in a scan is so low that it is safe for infants, children, and adults of all ages, including people with pacemakers and pregnant women.

HOW OFTEN SHOULD I BE SCANNED?

Regular ZYTO scanning will provide you with up-to-date biocommunication information as your body changes. Your practitioner will guide you with the specific scan schedule best for you.



The ZYTO Hand Cradle has been cleared by the FDA for the measurement of galvanic skin response. ZYTO software has not undergone FDA review for effectiveness. ZYTO technologies are not intended to be used in the diagnosis, cure, treatment, mitigation, or prevention of any disease or medical condition. The diagnosis and treatment of medical conditions should only be undertaken by qualified medical professionals. ZYTO professional software provides general wellness information and should not be used without the involvement of a licensed healthcare professional. ZYTO products have not been the subject of controlled clinical trials to establish their effectiveness and their use is not a generally accepted medical practice by the traditional medical establishment. If you have any questions regarding ZYTO technology or our products please contact us at info@zyto.com.

Tired of guessing about NUTRITIONAL SUPPLEMENTS?



Even though there are many excellent nutritional supplements to choose from, one size does not fit all and your individual needs change from time to time—making it difficult to know what products, oils, and supplements would most benefit you today.

With ZYTO technology, you can determine your biological coherence for Virtual Items representing specific nutritional products, oils, and supplements. This information helps you eliminate the guesswork when deciding which wellness products to purchase and use.

MAKE BETTER DECISIONS WITH ZYTO

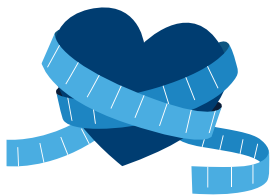


The ZYTO software analyzes your body's galvanic skin response (GSR) against a specific library of Virtual items to determine which products your body reacts to most coherently. This is called biocommunication.

When you place your hand on the ZYTO Hand Cradle, electrical stimuli are sent to the body and the Hand

Cradle measures your body's GSR. The ZYTO software analyzes the GSR data and ranks the products in comparison with your baseline GSR. A report is then generated showing the products that your body responded to more coherently, helping you make better decisions to maintain optimal health.

WHAT BENEFITS SHOULD I EXPECT?

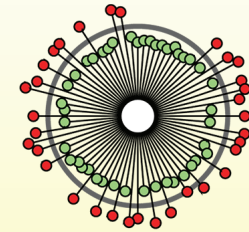


You want to invest in supplements and oils that will do you the most good. When you make choices based on your biological responses, you're less likely to spend money on things you don't need and are more likely to get the wellness benefits you're looking for.

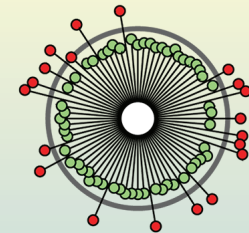
By getting a ZYTO scan every month, you can keep up with your body's changing needs. Monthly scans help keep your wellness on track, so you can maintain positive long-term results.

Get your ZYTO assessment and start making better wellness decisions today!

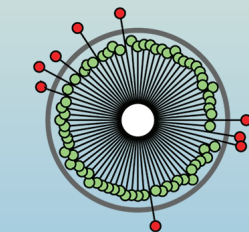
SAMPLE REPORT



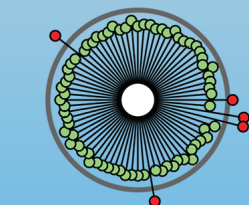
BASELINE
Biomarkers
Out of Range: 33



LAVENDER
Biomarkers Brought
into Range: 13



OMEGA-3
Additional Biomarkers
Brought into Range: 11



VITAMIN B5
Additional Biomarkers
Brought into Range: 4

Understanding the ZYTO reports

When your scan is complete, a report is generated that provides you and your practitioner with helpful information.

This report may provide insights that will prompt a closer look at your biological preference for nutritional supplements and services to help maintain your health and wellness.

Biological preference simply means those Virtual Items to which your body responds most coherently. Using this information, you and your practitioner can decide on a strategy developed specifically for you, based on your body's responses.

Does your body know what it wants?

Maybe you just need to ask!



STRESSOR VIRTUAL ITEM RESPONSES: 4 CORE SYSTEMS



STRESSOR VIRTUAL ITEM RESPONSES: LIFESTYLE AREAS



How can I learn more?

There are many different ZYTO scans to choose from, and your practitioner will be able to help select which is most appropriate for you. The best way to learn more is to make an appointment to get your scan. You can also get more information at ZYTO.com.

"ZYTO has allowed me to expand my health & wellness practice with confidence that I am getting individualized analysis for each of my clients."

-Gwen Jones, OTR/L, LMT, BNH

BETTER DECISIONS FOR WELLNESS

An introduction to ZYTO biocommunication



ZYTO.COM

The ZYTO Hand Cradle has been cleared by the FDA for the measurement of galvanic skin response. ZYTO software has not undergone FDA review for effectiveness. ZYTO technologies are not intended to be used in the diagnosis, cure, treatment, mitigation, or prevention of any disease or medical condition. The diagnosis and treatment of medical conditions should only be undertaken by qualified medical professionals. ZYTO professional software provides general wellness information and should not be used without the involvement of a licensed healthcare professional. ZYTO products have not been the subject of controlled clinical trials to establish their effectiveness and their use is not a generally accepted medical practice by the traditional medical establishment. If you have any questions regarding ZYTO technology or our products please contact us at info@zyto.com.

MKD-01301.D

ZYTO™

Biocommunication

What does your body need to stay healthy? Many people choose to take nutritional supplements, but may guess as to what supplement will work best. Even though a supplement may work for someone else, how do you know it's providing the support you need at the present time?

To make better decisions about these and other wellness choices, you should consider ZYTO biocommunication. Biocommunication is an exchange of information between a computer and your body; it's like the computer is asking questions and your body is answering them.

These shifts, either positive or negative in relation to a baseline measurement, identify what is called your biological coherence. This information is used to make better decisions about your health and wellness.

The biocommunication revolution

Biocommunication represents a major breakthrough in gathering information. It's an effective and unique way to obtain important insights. This information can help your practitioner develop more effective and individualized strategies for you, saving time and money.

What can I expect from my experience?

The interface between your body and ZYTO's biocommunication software is the ZYTO Hand Cradle, a Class II medical device which has been cleared by the FDA. Simply rest your hand on the metal contact points while the computer gathers your GSR data. The scan takes a few minutes to complete and is safe for adults and children.



Here's how it works

The ZYTO software runs an energetic signature called a Virtual Item. Virtual Items are representative of actual items including nutritional supplements, body systems, and organs. As each item is run, your body's electrical response is measured and recorded. The way your body responds is energetic; it's called galvanic skin response, or GSR. ZYTO software measures complex GSR patterns and determines shifts in your energetic posture.

"Each person's uniqueness demands a personalized approach to their individual wellness needs. Using ZYTO technology to know a person's biological coherence helps me to understand a fuller picture of wellness. The ZYTO system does this in an affordable and highly cost-effective manner."

– W. Lee Cowden, MD, MD(H)



HOW THE ZYTO™ SCAN WORKS



ZYTO.COM

The ZYTO Hand Cradle has been cleared by the FDA for the measurement of galvanic skin response. ZYTO software has not undergone FDA review for effectiveness. ZYTO technologies are not intended to be used in the diagnosis, cure, treatment, mitigation, or prevention of any disease or medical condition. The diagnosis and treatment of medical conditions should only be undertaken by qualified medical professionals. ZYTO professional software provides general wellness information and should not be used without the involvement of a licensed healthcare professional. ZYTO products have not been the subject of controlled clinical trials to establish their effectiveness and their use is not a generally accepted medical practice by the traditional medical establishment. If you have any questions regarding ZYTO technology or our products please contact us at info@zyto.com.

MKD-01101.E

Maintaining Your Wellness

Every cell in your body is networked together, sending and receiving information to coordinate the millions of functions it processes every day.

As your body adjusts to changing conditions to stay healthy, it uses these communication pathways to direct available resources to maintain balance. Your body is so efficient that most of the time you never know these adjustments are happening.

When your body encounters a larger health challenge, it may begin to show symptoms such as elevated body temperature, swelling, pain, tiredness, or a cough.

Once you recognize a symptom, you can begin to assist the healing process. Things like getting more sleep, drinking more water, taking nutritional supplements, or taking medication under a medical professional's supervision can help your body deal with these challenges.



Too often we ignore our health and wellness until we get so sick that symptoms appear. Wouldn't you rather support your body's day-to-day efforts to stay well?

But how do you know which products and options to choose to support and maintain optimal wellness? Wouldn't it be nice if you could just ask your body?

How a ZYTO Scan Works

During a ZYTO scan, the Hand Cradle measures your body's galvanic skin response (GSR). The data gathered by the Hand Cradle is evaluated by the software in the context of various digital signatures called Virtual Items. Virtual Items are representative of a wide range of things like foods, nutritional supplements, body organs, and systems.

Virtual Items can be organized into sequences for scanning. You can think of ZYTO scans as questionnaires to which your body's GSR data provides the answers.

These scans are designed by some of the best and brightest professionals in the world for the purpose of providing the most pertinent information about your wellness.

At the completion of a scan, the software's analysis is documented in the form of a report. Information gathered in this way can help you make decisions to maintain your wellness.

4 CORE BODY SYSTEMS FOR WELLNESS



The 4 core systems that are critical to maintaining health are:

1. Detoxification System
2. Gastrointestinal System
3. Hormonal/Endocrine System
4. Immune System

Why These 4?

Whether you are very ill, seeking to prevent illness, or just trying to improve your overall health or fitness levels, it is important to evaluate these four systems. How these systems function both independently and interdependently has a profound influence on your health. If one or more is compromised, the negative effects spill over to all other systems, creating a chain of events that can greatly impact your overall health.

If you are serious about preventing health problems or creating an environment where the body can heal, you are cheating yourself out of success if you do not focus on these systems.

STRESSOR VIRTUAL ITEM RESPONSES: 4 CORE SYSTEMS



STRESSOR VIRTUAL ITEM RESPONSES: LIFESTYLE AREAS



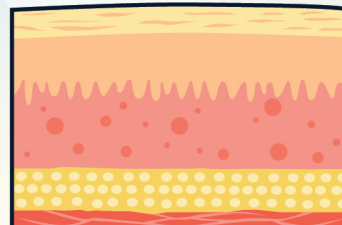
1 ZYTO HAND CRADLE

The ZYTO Hand Cradle is a medical device cleared by the U.S. Food and Drug Administration to measure the user's galvanic skin response (GSR).



2 GALVANIC SKIN RESPONSE

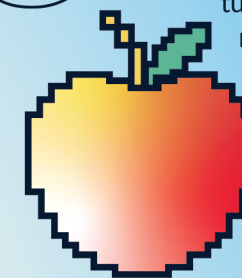
GSR is an established technology that measures the electrical conductivity of the skin. One familiar application of GSR is lie detector testing. During a ZYTO scan, the user's baseline GSR is measured by the Hand Cradle, followed by the ZYTO



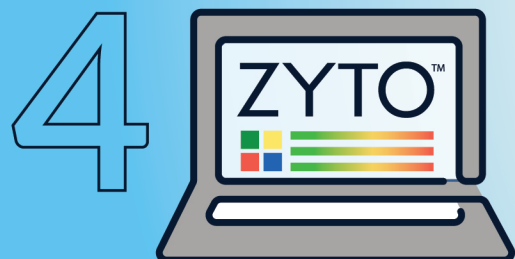
software running a digital signature, then a subsequent GSR measurement is taken. This cycle is repeated as many times as there are digital signatures in the selected scan. Each cycle takes less than half a second.

3 DIGITAL SIGNATURES

The digital signatures in ZYTO's library each represent an actual item. After the software introduces each digital signature, a new corresponding GSR reading is taken. The GSR reading may have changed after the digital signature has been run in the ZYTO software.



HOW THE ZYTO™ SCAN WORKS

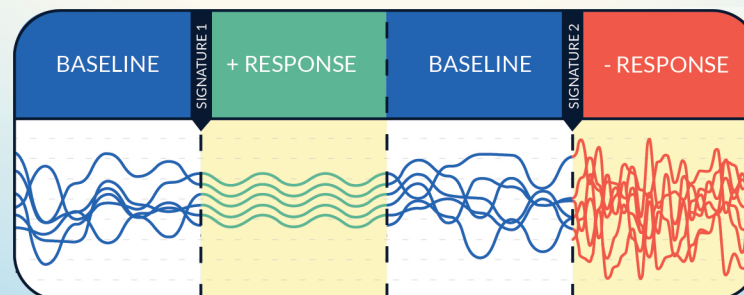


PROPRIETARY SOFTWARE

Each baseline GSR measurement and the GSR measurements taken after the software runs each digital signature become inputs into a unique formula found only in the ZYTO software.

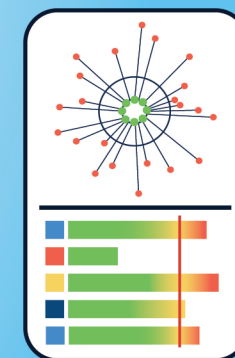
5 BIOLOGICAL PREFERENCE

The numeric value produced by the ZYTO software indicates how divergent the digital signature response was from the baseline. We call digital signatures that produce more coherent or balanced responses biological preferences.



6 PRIORITIZED RESULTS

At the end of the scan, an easy-to-read report is generated that displays a ranking of the Virtual Items whose corresponding digital signatures resulted in greater biological coherence. The report is available to assist individuals as they choose options to maintain health and wellness. We call this whole process Biocommunication.



LEARN MORE

Learn more at [ZYTO.com/bioscan](https://zyto.com/bioscan)



7 REASONS

to Get a ZYTO Biocommunication Scan

1. Remove verbal communication barriers

2. Get insights into personal wellness

3. Identify biological coherence to nutrition

4. Focus on specific wellness areas

5. Save money

6. Track your wellness

7. Get a scan anywhere